

PAG 133 P 37

2, 8, 6

(180-121) P 69

$$\alpha = 85^\circ$$

$$\beta = 145^\circ$$

$$\gamma = 120^\circ$$

PAG 124 76

$$\beta = 180 - 2(38) = 104^\circ$$

$$(\beta + 38) + 2\alpha = 180^\circ$$

$$104 + 38 + 2\alpha = 180^\circ$$

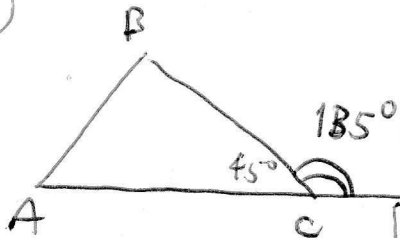
$$2\alpha = 180 - 142$$

$$\alpha = \frac{38}{2} = 19^\circ$$

~~100~~
PAG 124 P 82

$$\hat{C}_e = 135^\circ$$

$$\hat{B} - \hat{A} = 21$$



$$\hat{C} = 180^\circ - 135^\circ = 45^\circ$$

$$\hat{B} = 21 + \hat{A}$$

$$\hat{A} + \hat{B} + \hat{C} = 180^\circ$$

$$\hat{A} + 21 + \hat{A} + 45^\circ = 180^\circ$$

$$2\hat{A} = 114$$

$$\hat{A} = 57^\circ$$

$$\hat{B} = 78^\circ$$

PAG 126 P 103

a

$$2x + x + 6x = 180$$

$$9x = 180^\circ$$

$$x = 20^\circ$$

$$x + 4y = 180^\circ$$

$$20 + 4y = 180^\circ$$

$$4y = 160$$

$$y = 40^\circ$$

b

$$x + y = 180^\circ \quad z = 0$$

$$66 + 48 + 2z = 180^\circ$$

$$2z = 180^\circ - 114$$

$$2z = 66$$

$$z = 33^\circ$$

$$x = 180^\circ - (66 + 33) = 81$$

$$y = 180^\circ - x = 99^\circ$$

128 P 122

$$S_{\text{POLY}} = (n-2)\pi$$

$$2700 = (n-2)180^\circ$$

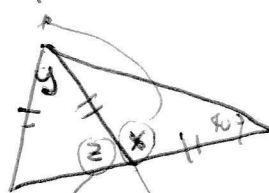
$$180n = 2700 + 360$$

$$180n = 3060$$

$$n = 17$$

c

$$x = 180 - 2(40) = 100^\circ$$



~~$$z = 180 - 100 = 80^\circ$$~~

$$z = 180^\circ - x = 180^\circ - 100 = 80^\circ$$

~~$$y = 180 - 100 = 80^\circ$$~~

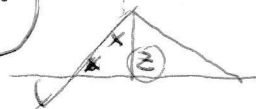
$$y = 180^\circ - 2z =$$

$$y = 180^\circ - 160 = 20^\circ$$

d

$$x = 180^\circ - (100 + 27)$$

$$x = 53^\circ$$



~~$$z = 180 - 100 = 80$$~~
$$z = 180 - 100 = 80$$

$$y = 180^\circ - 2z$$

$$y = 180^\circ - 160 = 20^\circ$$

$$y = 20$$

PAG 153 n° 37

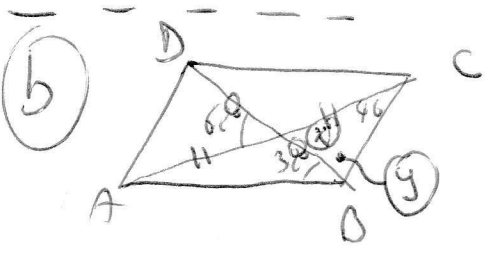
(2) $\circ + 144 = 180^\circ$ (CONIUGATI DI RETTE //)

$\circ = 180 - 144 = 36$

$(\circ \circ) = 72^\circ$

L'ALTRO ANGOLO (ANGOLI ADIACENTI AL LATO SUPPLEMENTARI)

$x = 180^\circ - 72 = 108^\circ$



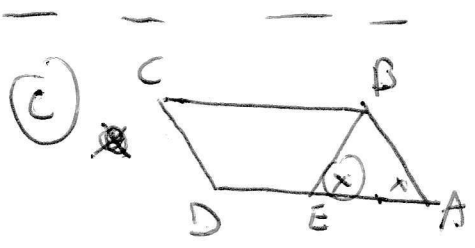
$x = 62^\circ$ OPPOSTI AC VS 2TE

$y = 180^\circ - (x + 44) = 180^\circ - (62 + 44)$

$y = 74$

$\hat{D} = \hat{B} = 74 + 32 = 106^\circ$

$\hat{A} = \hat{C} = 180^\circ - 106 = 74^\circ$



$\hat{A} = x$

$2x = 180^\circ - 47$

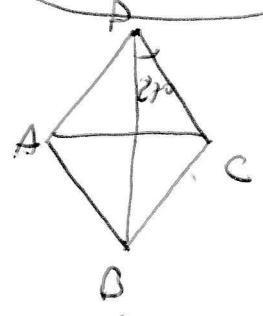
$x = 66,5^\circ$

$B = 180^\circ - 66,5 = 113,5^\circ$

PAG 163 n° 62

F / F / F / V

166 n° 94



$\hat{A} = \hat{C} = 27 \times 2 = 54^\circ$

$\hat{B} = \hat{D} = \frac{360 - 2 \cdot 54}{2} = 126^\circ$

G-167 n° 102

V / F / V / V

G-168 n° 115

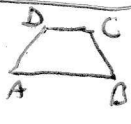
F / V / V

G-171 n° 135

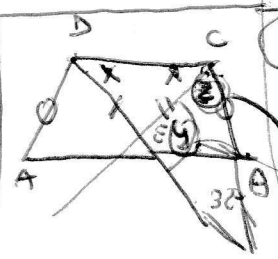
V / V / V / F

G-173 n° 157

$\hat{A} = 180 - 66 = 114^\circ = \hat{D}$
 $\hat{A} = \hat{B} = 180 - 114 = 66^\circ$



G-173 n° 160



$x = \frac{180 - 100}{2} = 40^\circ$
 $\hat{B} = 180 - (80 + 32) = 68^\circ$
 $C = x + z = 108^\circ$

$\hat{A} = \hat{B} = 180 - 108 = 72^\circ$